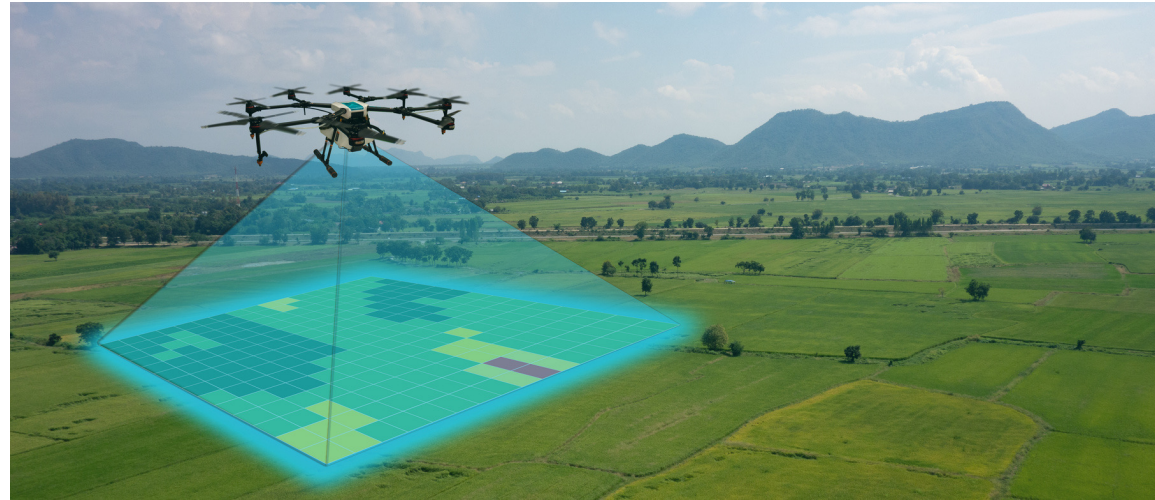


RESPOND FASTER, MAKE BETTER
DECISIONS



TODAY'S CHALLENGES

RESOURCE ALLOCATION (water, people, \$'s etc.)
PLANT HEALTH & RESILIENCE
ENVIRONMENTAL IMPACT
ADAPTABILITY AND RESPONSIVENESS
CONSUMER AND STAKEHOLDER DEMANDS
DEFINING NATURAL CAPITAL





ABOUT AirborneLogic

OUR MISSION

Helping growers gain confidence in how they use time, money and resources to grow better crops and adapt and respond to climate change

OUR VISION

To be the service and technology partners of choice for land managers looking to improve sustainability and their bottom line

OUR FOCUS

INCREASED PRECISION

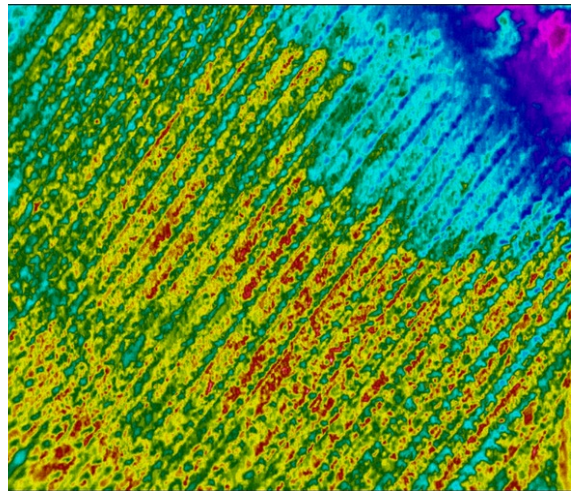
- Faster, more responsive data capture (drones/planes)
- High precision instruments (cameras, thermal, hyper and multi-spec sensors)
- Cutting edge analytics, automated
- Targeted, actionable insights
- Mapping/analysing horticulture, crops, infrastructure, land, natural assets and carbon farming projects



PRECISION MAPPING IMPORTANT FEATURES



TOPOGRAPHY



HEAT STRESS /
IRRIGATION LEAKS



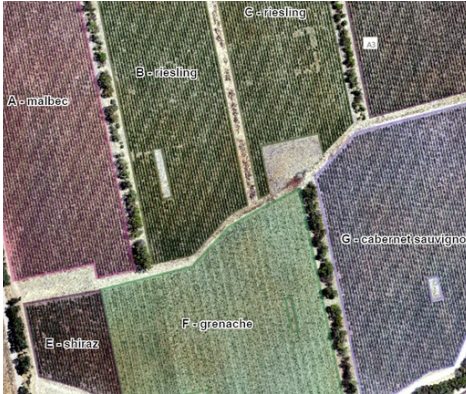
CHANGE OVER TIME

OUR PROCESS



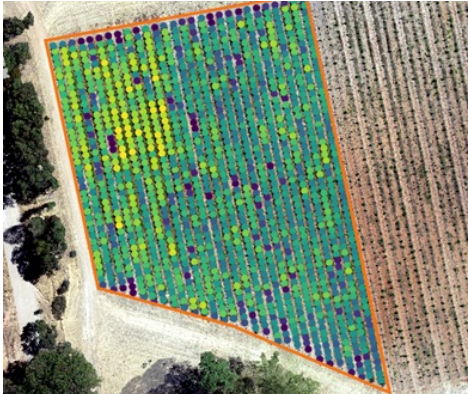
HIGH ACCURACY BASE MAPPING

2-4 cm accuracy



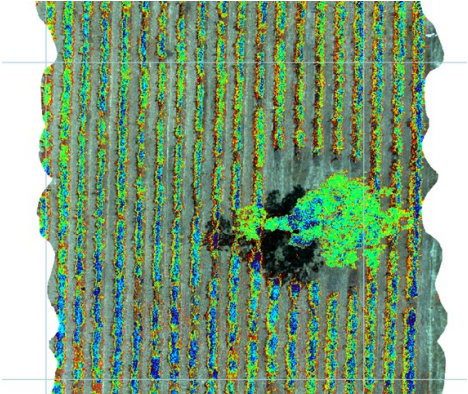
ASSET CLASSIFICATION

Detailed, geo-located asset maps



PLANT LABELING AND CANOPY MAPPING

Every vine labelled and segmented from its surrounds



ADVANCED PLANT LEVEL ANALYTICS

Analysis of heat stress, nutrition and declines in productivity

LABEL, GEO-LOCATE AND ANALYSE IMPORTANT FEATURES

AirborneLogic | EXAMPLE ESTATE ▾
GROWER PORTAL

HOME | LAYER LIST | LEGEND | OVERVIEW | VIGORMETRIC ▾ 1

SUMMARY | DETAILS

Example Estate ⓘ

Block Count	13
Row Count	887
Vine Count	88,391
Total Row Length (...)	176796
Total Block Area (ha)	45.2

Blocks ⓘ

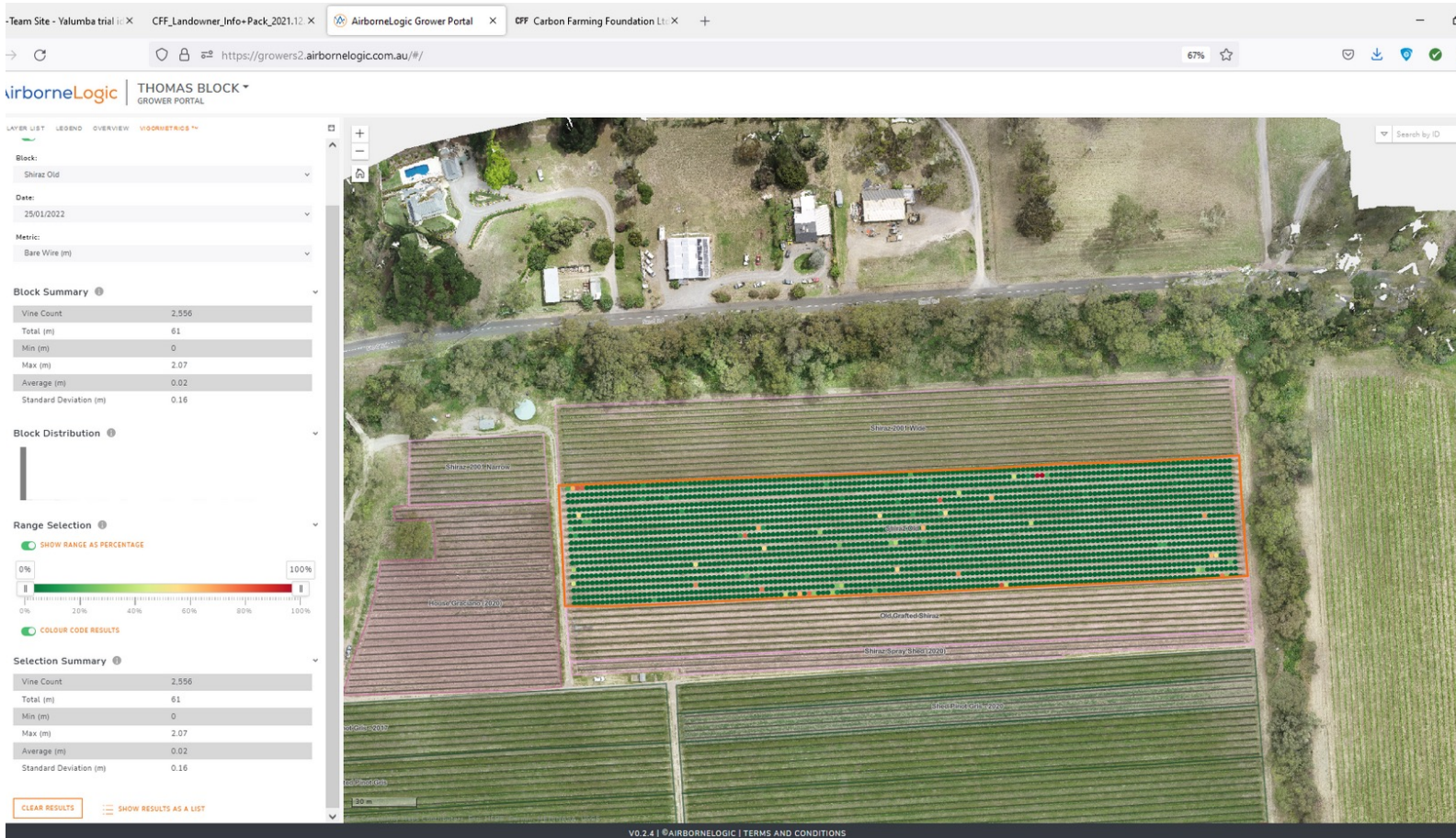
Block Na...	Variety	Last Capt...
A	malbec	22/01/2021
B	riesling	22/01/2021

Map labels: A - malbec, B - riesling, C - riesling, D - shiraz, E - shiraz, F - grenache, G - cabernet sauvignon, H - chadonnay, I - sauvignon blanc, J - shiraz, K - tempranillo, M - cabernet sauvignon

200 m | Esri Community Maps Content | HERE | Garmin | METUNASA | Powered by Esri

V0.2.4 | ©AIRBORNELOGIC | TERMS AND CONDITIONS

ESTIMATE VALUE OF LOST PRODUCTIVITY

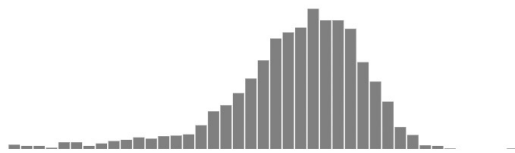


GROWER PORTAL, DETECT PROBLEM AREAS, EASY ACTION

LOST PRODUCTIVITY, CANOPY UNIFORMITY, DISEASE

Tree Count	2,544
Total (m ²)	11,755
Min (m ²)	0
Max (m ²)	8.08
Average (m ²)	4.62
Standard Deviation (...)	1.09

Block Distribution ⓘ ▼



Range Selection ⓘ ▼

SHOW RANGE AS PERCENTAGE

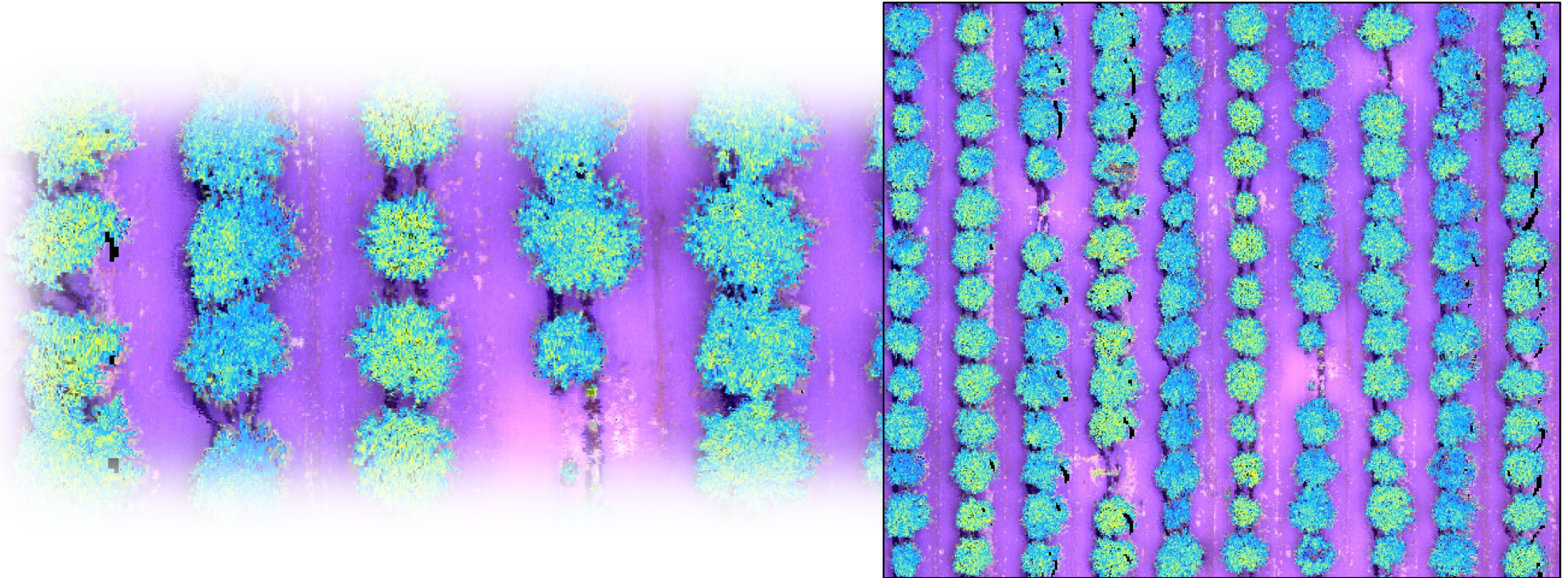
0%

100%



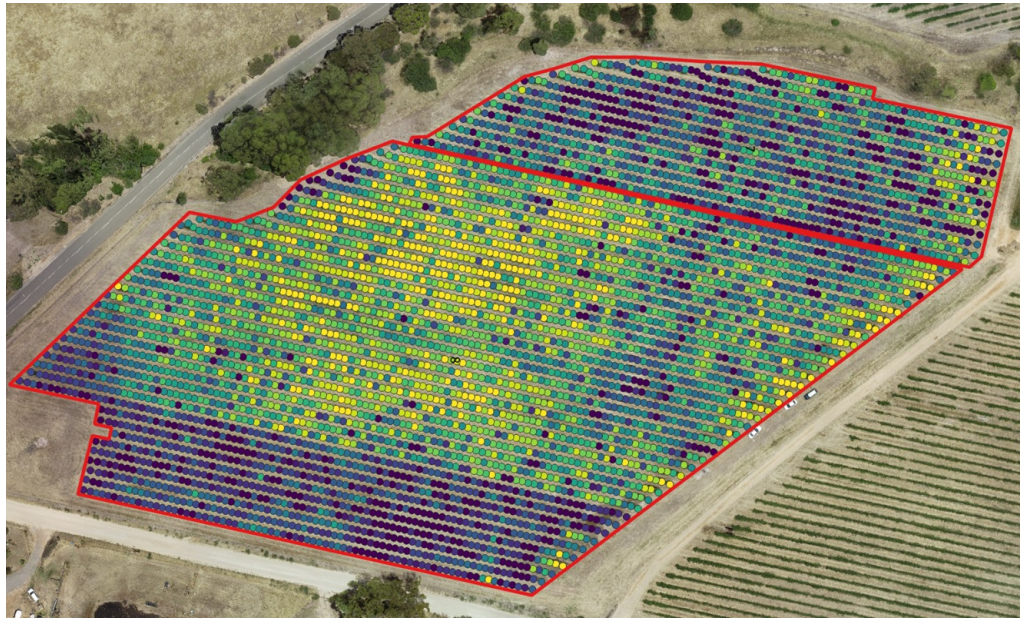
Citrus Orchard – tree count, gaps & image classification for disease

LOST PRODUCTIVITY, CANOPY UNIFORMITY, DISEASE

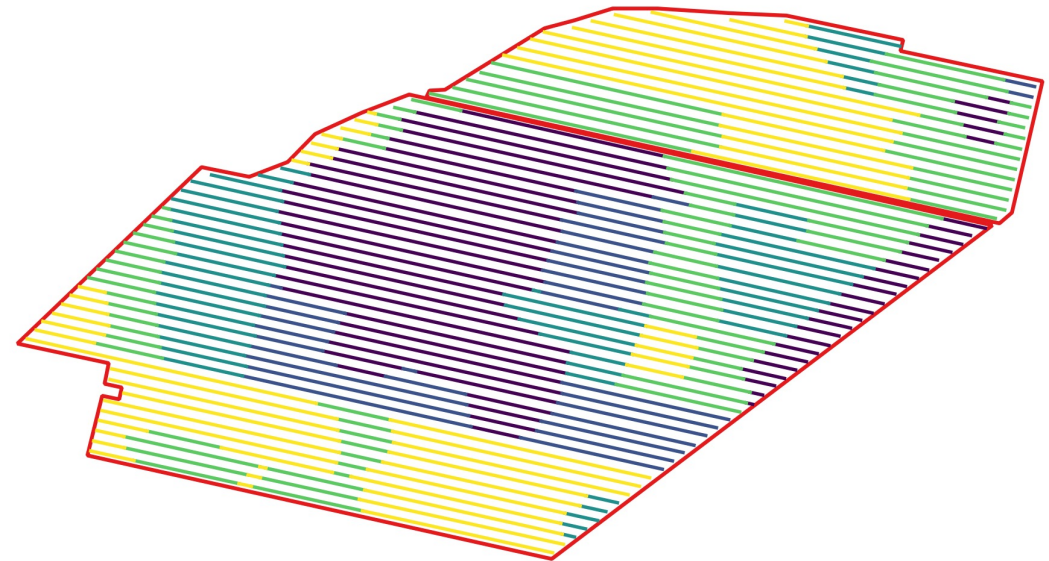


Almond Orchard – tree count, classification for nutrition, P/K ratio - using hyperspectral imaging

CONVERTING OBSERVATIONS INTO ACTION

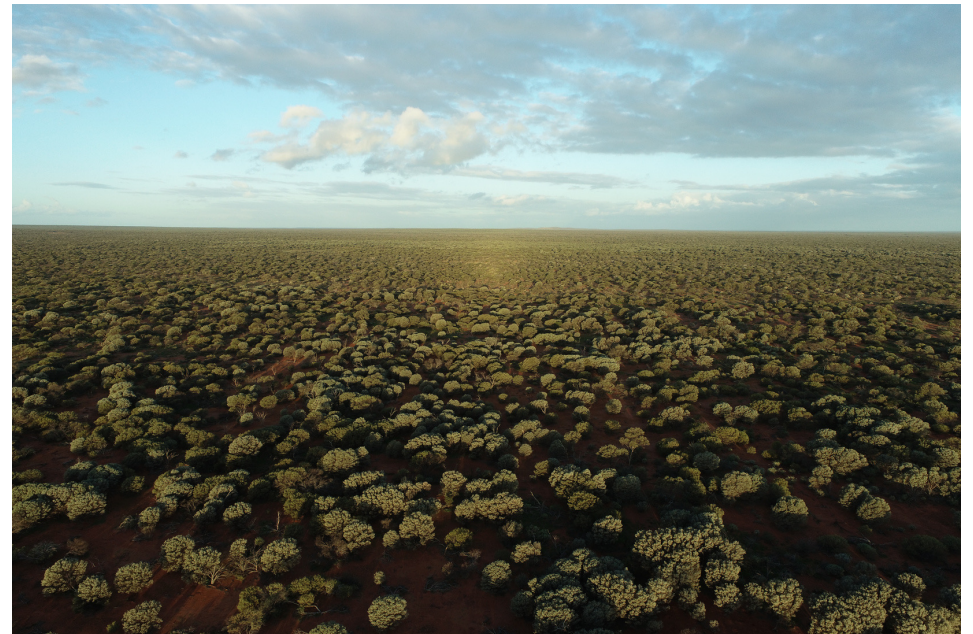


PLANT VARIABILITY



VARIABLE RATE APPLICATION PLANS

LAND CONDITION, PLANT ID + CARBON FARMING BENCHMARKING AND REPORTING



SPECIES DETECTION, AUTOMATED CANOPY AREA MEASUREMENT

CONTACT US



MAILING ADDRESS

Room 108 ThincLab Waite Hannaford
Building Waite Campus
URRBRAE South Australia 5064

EMAIL ADDRESS

dan@airborneLogic.com.au
andy@airborneLogic.com.au

PHONE NUMBER

+61 (0) 400 759 245 (Dan French)
+ 61 (0) 419 817 205 (Andy Chambers)

